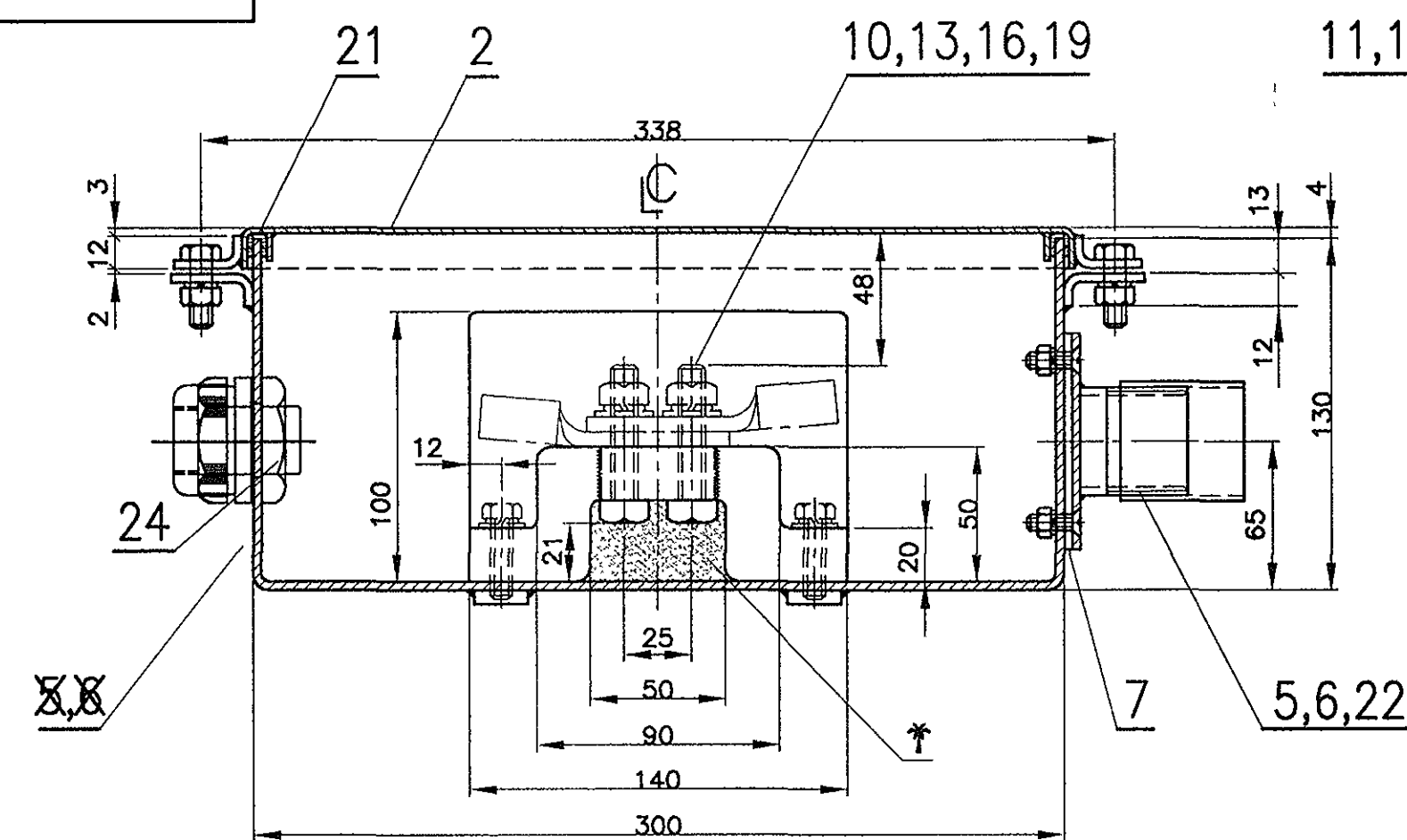


Additional Terms and Conditions for Bidders (including Pre-Qualification requirements)

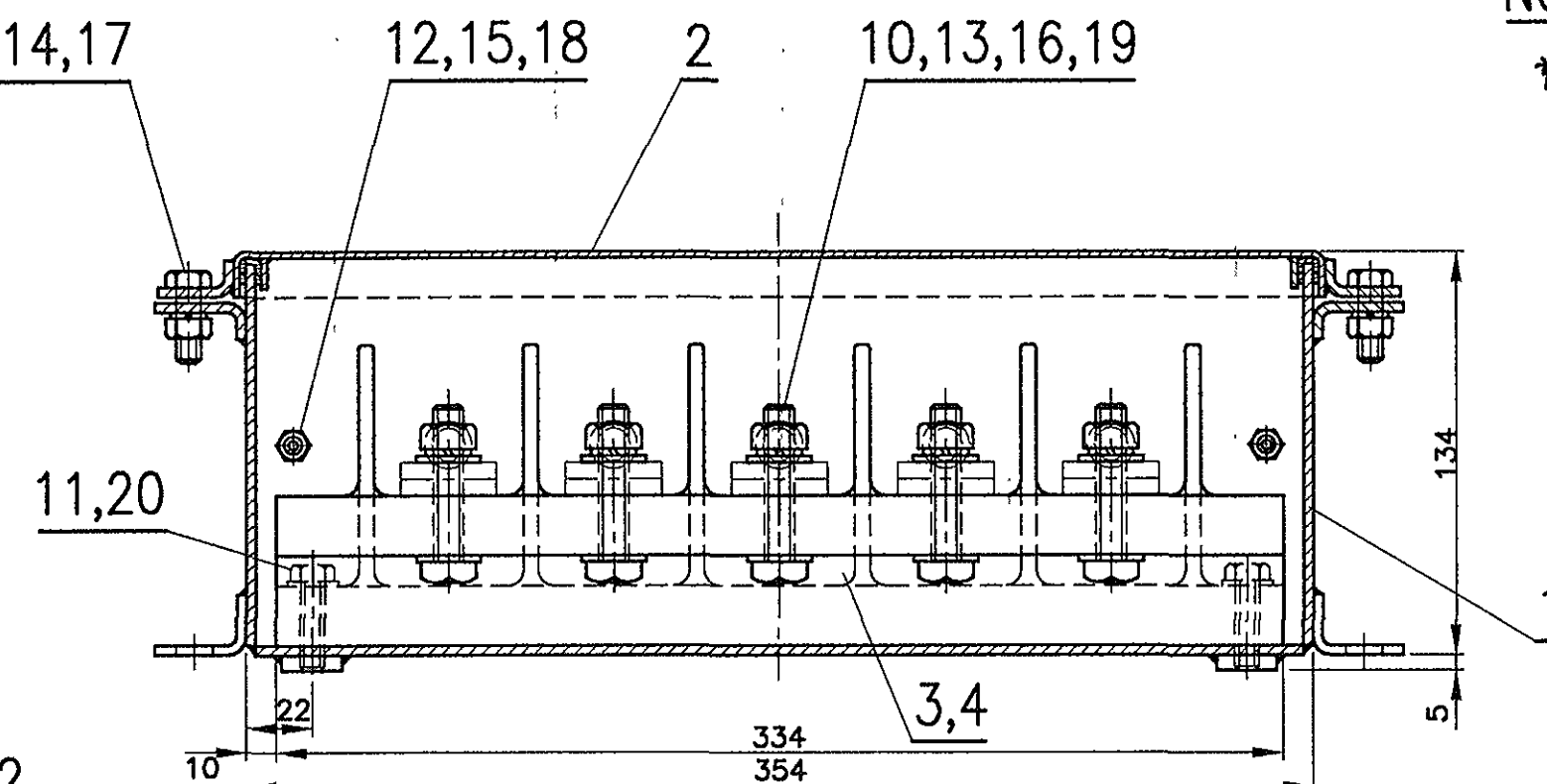
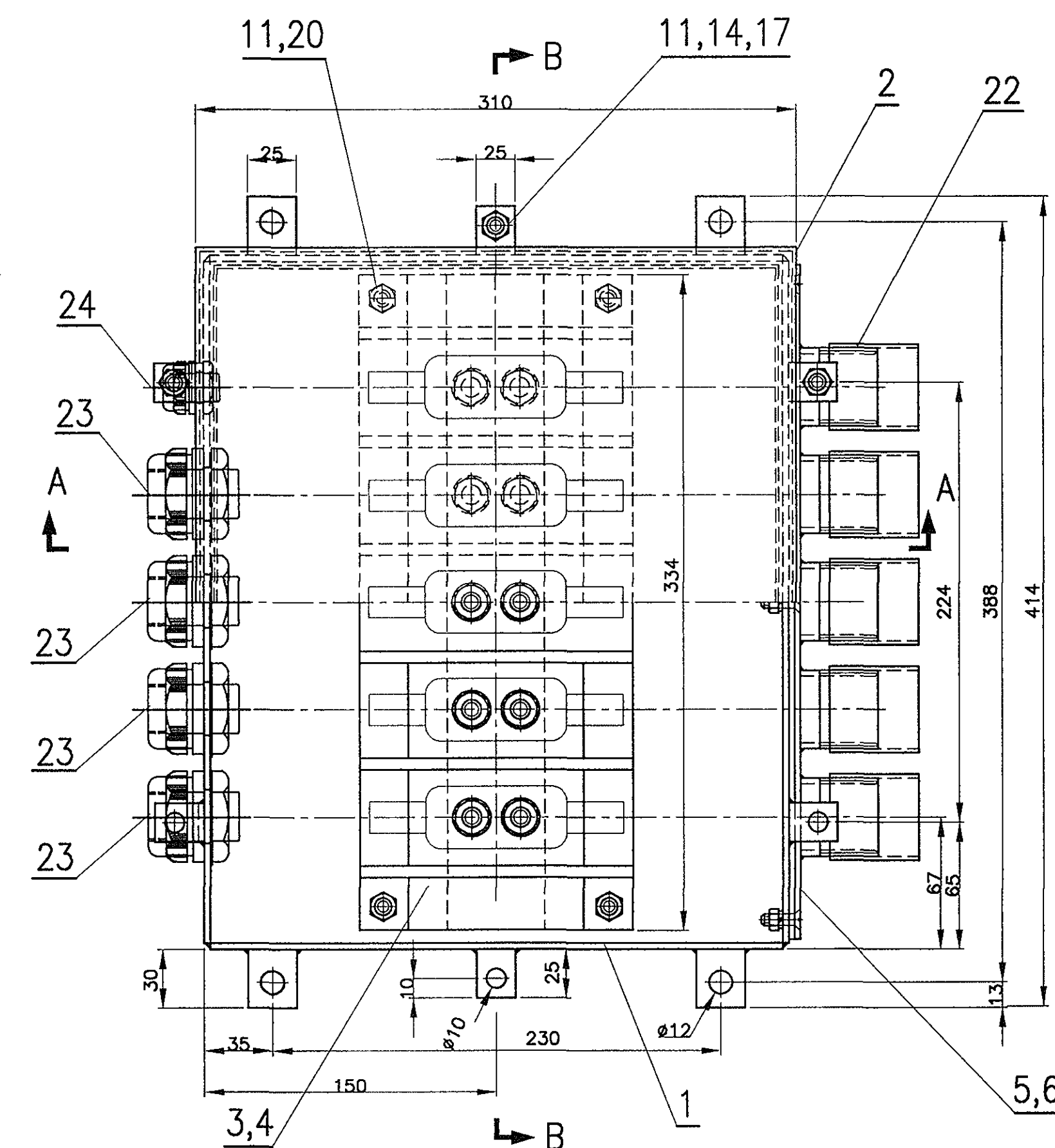
ATC for “Stainless steel Traction motor connection box suitable for underslung mounting”.

Additional Terms and conditions:

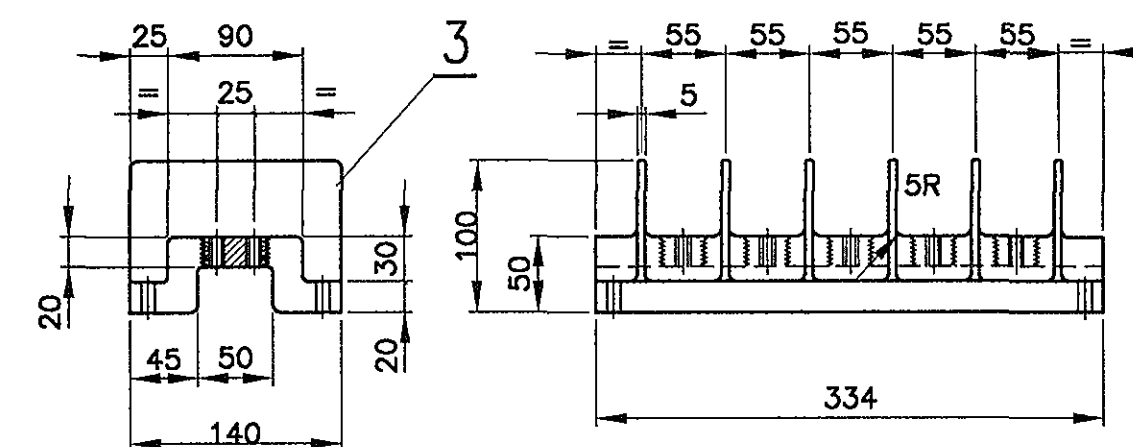
S. No	Description of requirement	Document to be attached
1	Bidder should submit a self-declaration stating that, “Offered item is same as per enquiry and there is no deviation”.	Self-declaration on letterhead of firm.
2	Data Sheet / Drawings / Catalogues of the product (s) offered in the bid, are to be uploaded along with the bid documents. Buyers can match and verify the Data Sheet with the product specifications offered. In case of any unexplained mismatch of technical parameters, the bid is liable for rejection	Data Sheet / Drawings / Catalogues of the product (s)
3	In case Bidder is not be OEM but its Reseller then bidder to submit valid authorisation certificate from OEM with the bid.	Authorisation certificate
4	Registration / Empanelment Requirement: Contract shall be awarded to only such bidder or their OEM (in case of reseller), who are approved by ICF/RDSO/Indian Railways for the Stainless steel Traction motor connection box suitable for underslung mounting for DETC (Diesel Electric Tower Car) application on the date of bid opening to qualify for this tender.	Supporting document of approval.



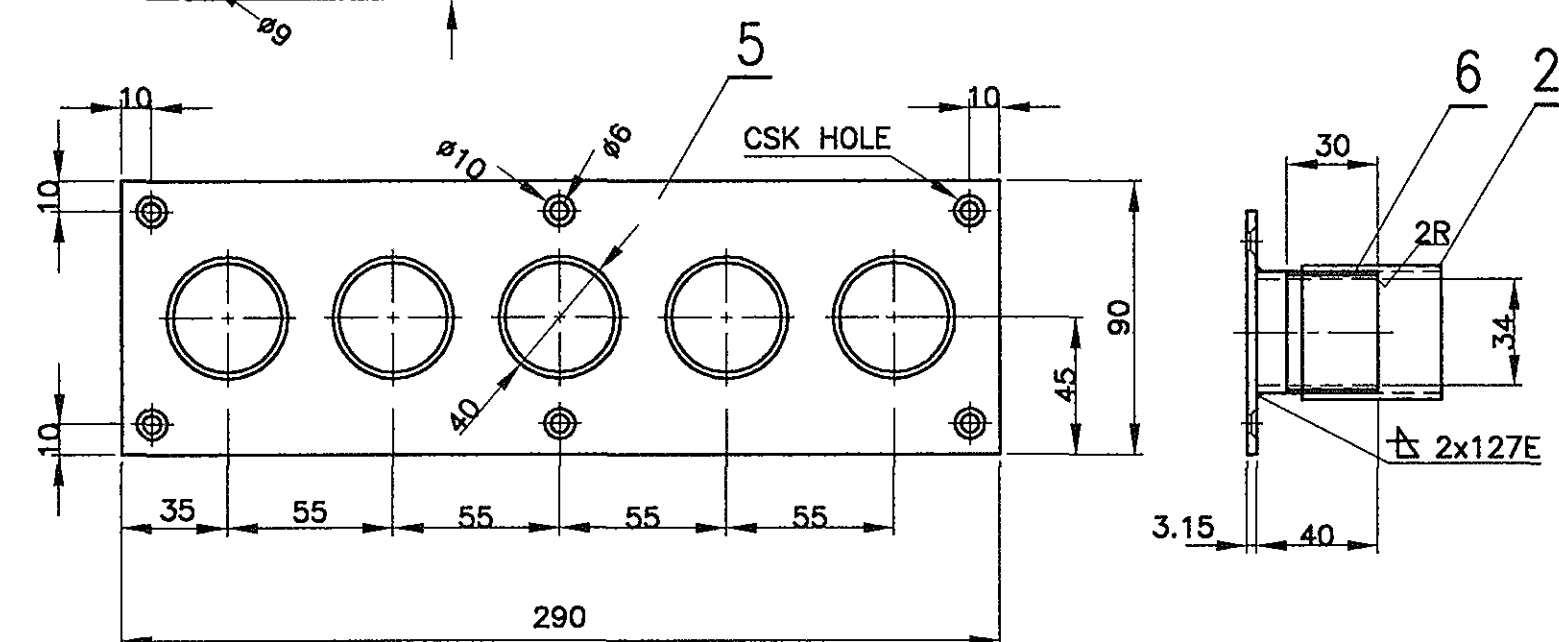
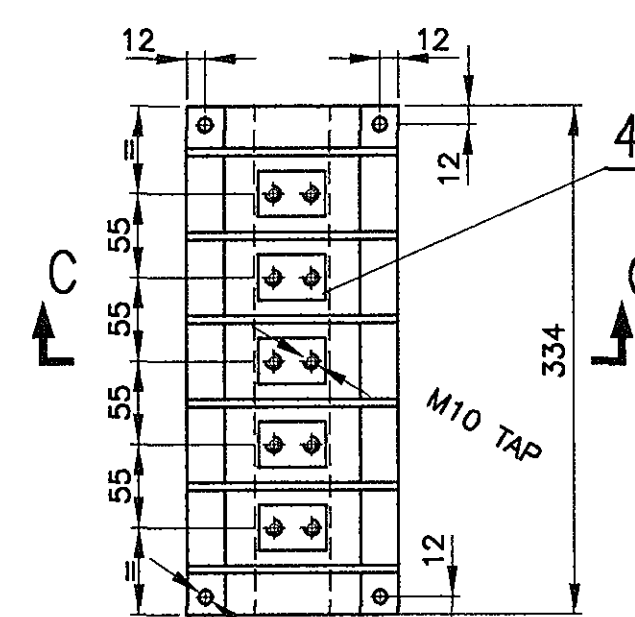
SECTION-AA



SECTION-BB



SECTION-CC



TRAY SIDE

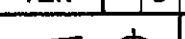
NOTE.

- † 1. TO BE FILLED WITH EPOXY BASED COMPOUND.
2. ITEM-21 TO BE GLUED TO SUIT WITH ITEM-2 AS SHOWN IN THE DRAWING.
3. ITEM-4 TO BE INSERTED IN ITEM-3 BY USING PROPER COMPOUND BASE.
4. THE MECHANICAL AND ELECTRICAL PROPERTIES OF FIBRE GLASS REINFORCED PLASTICS MANUFACTURED WITH 25% GLASS CONTENT AND SELF-EXTINGUISHING GRADE SHALL CONFORM TO THE FOLLOWING REQUIREMENTS.

SL.NO.	PROPERTY	UNITS	SPECIFIC VALUE	METHOD OF TEST
1.	SPECIFIC GRAVITY	—	1.75 TO 2	BS:2782 OR IS:1998—1962
2.	TENSILE STRENGTH	Mpa	60 (MIN)	—DO—
3.	CROSS BREAKING STRENGTH	Mpa	150 (MIN)	—DO—
4.	COMPRESSIVE STRENGTH.	Mpa	150 (MIN)	—DO—
5.	IZOD IMPACT STRENGTH	Joules per meter	450 (MIN)	—DO—
6.	WATER ABSORPTION	%	0.2 (MAX)	—DO—
7.	DIELECTRIC STRENGTH	kV/mm	11	—DO—
8.	TRACKING INDEX	volts	>1000	IEC:112
9.	ARC RESISTANCE	Sec.	180	ASTM—D—495
10.	FLAMMABILITY.	Sec.	Self Extinguishing	Refer Sheet—2 of ICF/ELEC/862

5. NAME PLATE INDICATING MANUFACTURER/SUPPLIER NAME WITH SL.NO,MONTH & YEAR OF MANUFACTURERS SHALL BE RIVETTED AT SUITABLE LOCATION.

			1	METAL CABLE GLAND WITH LOCKNUT (TO CABLE O.D 12.6mm)	24				1P-65 AS PER IEC 60529
			4	METAL CABLE GLAND WITH LOCKNUT (TO CABLE O.D 20.6mm)	23				
			5	SCREWED COUPLER Ø40	22	IS:2667-76 TAB-1	ALUMINIUM		
			1	RUBBER PACKING 2x20x130B	21				SHORE HARDNESS 45 TO 60
			4	PLAIN WASHER Ø9	20	IS:2016-67 T-2,TYPE-A	IS:1977-75 Fe.310.0		
			20	PLAIN WASHER Ø12	19	IS:2016-67 T-2,TYPE-A	IS:1977-75 Fe.310.0		
			6	SPRING WASHER M6	18				
			6	SPRING WASHER M8	17	IS:3063-72 T-1,TYPE-B	IS:4072-75 GR.3		
			10	SPRING WASHER M10	16				
			6	HEX.NUT M6	15				
			6	HEX.NUT M8	14	IS:1363-84 PT.3,TAB-1			GALVD.
			10	HEX.NUT M10	13				
			6	CSK.HD.SCREW AM6x20	12	IS:1365-78 TAB-1&2			
			10	HEX.HD.SCREW M8x25	11	IS:1363-84 PT.1,TAB-1&2			
			10	HEX.HD.SCREW M10x55	10	IS:1363-84 PT.1,TAB-1&2			
			5	WORM DRIVE HOSE CLIP SIZE.45	9	IS:4762-68 TYPE-A			TYPE A
			5	GATER	8		NEOPRENE RUBBER		
			1	GASKET 3x80x290	7		IS:4523		SHORE HARDNESS 45 TO 60
			5	CONDUIT Ø40x43	6		IS:1653-72		GALVD.
			1	GLAND PLATE 3.15x80x290	5		IS:1079-73 GR.ST.34-1079		GALVD.
			5	TERMINAL BASE BLOCK 20x30x45	4		STEEL		GALVD.
			1	TERMINAL BLOCK	3		FRP		SEE NOTE-4
			1	COVER ASSEMBLY	2	ICF/SK- 7-1-471			COL-II
			1	BOX ASSEMBLY	1	ICF/SK- 7-1-471			COL-I

NO. OFF				DESCRIPTION & DIMENSIONS				ITEM	REF. DRG.	MAT. & SPECN.	WEIGHT/UNIT				REMARKS						
IV	III	II	I	GROUP -7-1								SUPERSEDED BY:									
				PER ASSY.	MOTOR CONNECTION BOX								SUPERSEDED: ICF/SK-7-1-470 alt-c/Nil								
													SCALE	SSLD				SSLD			
													1:2.5	CHD.							
													1:5	ALT.				J.Jayanthi			
													1:1	CAD.				Tenie, I.G.			
					ALT.	a	b	c	d												
CAD FILE:- ED-CAD\077\7-1 470-SD00.DWG																					
				DATA CODE No. 077	INDIAN RAILWAY STANDARDS								SHEET 1 OF 1	 INTEGRAL COACH FACTORY CHENNAI-38							
												ICF/SK-7-1-470									

(d) 11/2011

ITEMS-23 & 24 ADDED.
ITEMS 8 & 9 DELETED.
QTY. FOR FOLLOWING ITEMS
ALTD. AS FOLLOWS.

ITEM	FROM	TO
5	2	1
6	10	5
7	2	1
12	12	6
15	12	6
18	12	6

SSE/D Dy.CEE/

ALTERATIONS

8/2000

DRAWING REVISED FOR
FIVE CABLE ENTRY
HOLES.

Sd/-	Sd/-
SSE/D	AEE/D

(b) 07/2002

NOTE-5 ADDED.

Sd/-	Sd/-
SSE/D	AEE/D

(c) 10/2005

ITEM-22 ADDED.

Sd/—	Sd/—
SSE/D	SEE/D

★ NO. OF ASSEMBLIES REQUIRED/COACH

COLS.	I	II	III	
COACH				
SPURT CAR	I			